

Panorama

BUCKHEAD RESIDENCES

RESIDENCE

A-1

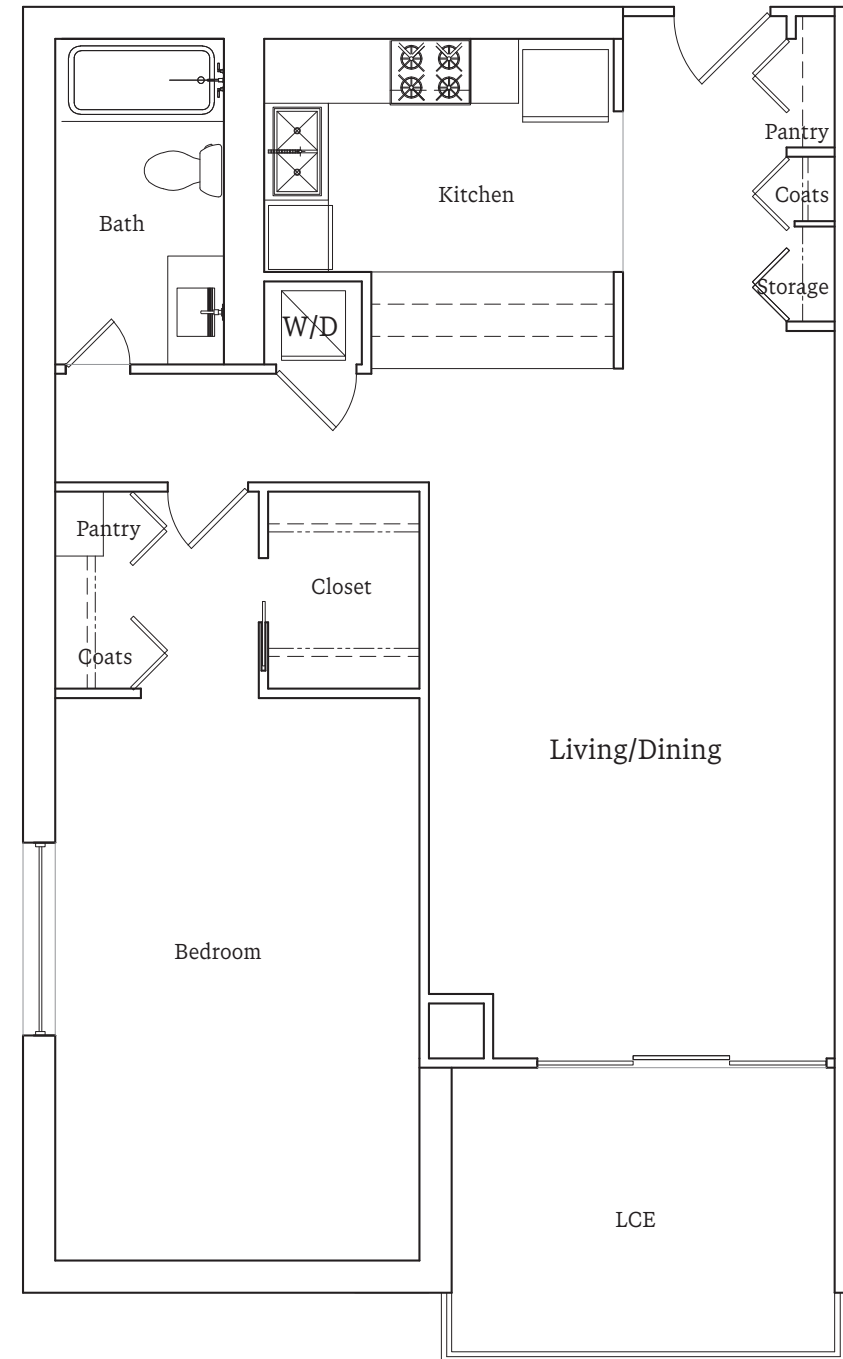
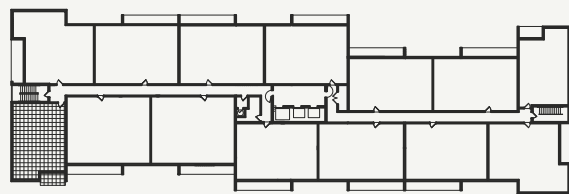
1 Bed End - 1 Bath
814 SQFT

UNITS

114, 214, 314, 414, 514, 614, 714, 814, 914,
1014, 1114, 1214, 1414, 1514, 1614, TS-14

FLOORS 1-17

PLAZA LEVEL
TOWER SUITES



404.474.2732 | SALES@PANORAMABUCKHEAD.COM | PANORAMABUCKHEAD.COM | 2460 PEACHTREE RD, ATLANTA, GA 30305

CRESCENT HEIGHTS® IS A REGISTERED TRADEMARK USED BY A GROUP OF COMPANIES. PANORAMA IS OWNED AND OPERATED BY 2460 PEACHTREE PROPERTY LLC, A SEPARATE, SINGLE-PURPOSE ENTITY SOLELY RESPONSIBLE FOR ITS OWN DEVELOPMENT, OBLIGATIONS, AND LIABILITIES. AMENITIES, SERVICES, AND FEATURES ARE SUBJECT TO CHANGE. WE ARE PLEDGED TO THE LETTER AND SPIRIT OF U.S. POLICY FOR EQUAL HOUSING OPPORTUNITY. NO REPRESENTATIONS OR WARRANTIES, EXPRESS OR IMPLIED, ARE MADE BY SELLER (AS DEFINED BELOW) AS TO THE ACCURACY OR COMPLETENESS OF THE INFORMATION, SERVICES, AND/OR MATERIALS CONTAINED HEREIN, INCLUDING, WITHOUT LIMITATION, RENDERINGS, DRAWINGS, DIMENSIONS, PHOTOGRAPHS, FLOOR PLANS, AMENITIES, FEATURES, AND UPGRADES, WHICH ARE REPRESENTATIONAL ONLY AND ARE SUBJECT TO CHANGE AT ANY TIME WITHOUT NOTICE AT THE SELLER'S SOLE DISCRETION. THE SKETCHES, RENDERINGS, GRAPHIC MATERIALS, DRAWINGS, PLANS, SPECIFICATIONS, MATERIALS, DESIGNS, FLOOR PLANS, LAYOUTS, ELEVATIONS, ART, FURNITURE, FIXTURES, APPLIANCES, AMENITIES, AND VIEWS ARE: (A) CONCEPTUAL AND ILLUSTRATIVE ONLY; AND (B) SUBJECT TO CHANGE OR MODIFICATION BY SELLER IN ITS SOLE DISCRETION AT ANY TIME AND FROM TIME TO TIME WITHOUT ANY PRIOR NOTICE. ANY SQUARE FOOTAGE OR CEILING HEIGHT MEASUREMENTS ARE APPROXIMATE ONLY, ARE NOT INTENDED TO CONSTITUTE REPRESENTATIONS, AND MAY BE BASED ON VARIOUS MEASUREMENT METHODOLOGIES, SUBJECT TO CONSTRUCTION VARIANCES AND TOLERANCES, AS WELL AS REDESIGN UPON COMPLETION OF DESIGN AND CONSTRUCTION. ACTUAL SQUARE FOOTAGES AND CEILING HEIGHTS MAY VARY. NET ACTUAL, USABLE SQUARE FOOTAGE IS LESS THAN ANY TOTAL OR GROSS SQUARE FOOTAGE INDICATED. SELLER RESERVES THE RIGHT TO MODIFY AND CHANGE THE DESIGN OF THE BUILDING, CONDOMINIUM UNITS, PRODUCTS, FINISHES, PLANS, MATERIALS, SPECIFICATIONS, AND FEATURES WITHOUT NOTICE OR OBLIGATION, IN ITS SOLE DISCRETION, IN ACCORDANCE WITH THE TERMS OF THE UNIT PURCHASE AGREEMENT, THE CONDOMINIUM DOCUMENTS, AND APPLICABLE LAWS AND REGULATIONS. THE PROJECT GRAPHICS, RENDERINGS, AND TEXT PROVIDED HEREIN ARE COPYRIGHTED WORKS OWNED BY THE SELLER. UNAUTHORIZED REPRODUCTION, USE, DISPLAY, OR OTHER DISSEMINATION OF SUCH MATERIALS, IN WHOLE OR IN PART, IS STRICTLY PROHIBITED. ALL FLOOR PLANS SHOWN ARE FOR ILLUSTRATIVE PURPOSES ONLY. FLOOR PLANS MAY NOT DEPICT FINAL DESIGNS, CEILING HEIGHTS, OR SQUARE FOOTAGES OF UNITS. ROOM SIZES SHOWN, TYPICAL SQUARE FOOTAGES, CEILING HEIGHTS, SHAPES AND SIZES OF ROOMS, FURNITURE, CABINETS, AND FURNISHINGS, AS DEPICTED, ARE APPROXIMATE AND MAY NOT BE DRAWN TO SCALE. SOME ITEMS SHOWN MAY NOT BE INCLUDED IN SOME OR ANY UNITS. PLANS AND DIMENSIONS MAY CONTAIN MINOR VARIATIONS FROM FLOOR TO FLOOR. THESE MATERIALS ARE PROVIDED FOR INFORMATIONAL PURPOSES ONLY AND DO NOT CONSTITUTE AN OFFERING OF CONDOMINIUM UNITS FOR SALE OR A SOLICITATION OF OFFERS TO PURCHASE CONDOMINIUM UNITS. THESE MATERIALS SHALL NOT CONSTITUTE A VALID OFFER IN ANY JURISDICTION WHERE PRIOR REGISTRATION IS REQUIRED AND NOT YET FULFILLED. "SELLER" MEANS 2460 PEACHTREE PROPERTY LLC, AND ITS AFFILIATED ENTITIES AND EACH OF THEIR RESPECTIVE MANAGERS, MEMBERS, OFFICERS, DIRECTORS, SHAREHOLDERS, PARTNERS, AGENTS, AFFILIATES, AND EMPLOYEES, WITH AN ADDRESS OF 2460 PEACHTREE RD NE, ATLANTA, GA 30309. ALL PRICES ARE SUBJECT TO CHANGE WITHOUT NOTICE. REAL ESTATE CONSULTING, SALES, AND MARKETING BY ANSLEY REAL ESTATE | CHRISTIE'S INTERNATIONAL REAL ESTATE, A GEORGIA LICENSED REAL ESTATE BROKER.